

MONTHLY MEMBERSHIP PROGRESS REPORT

District 13 OH3

Results as of: 2/29/2020

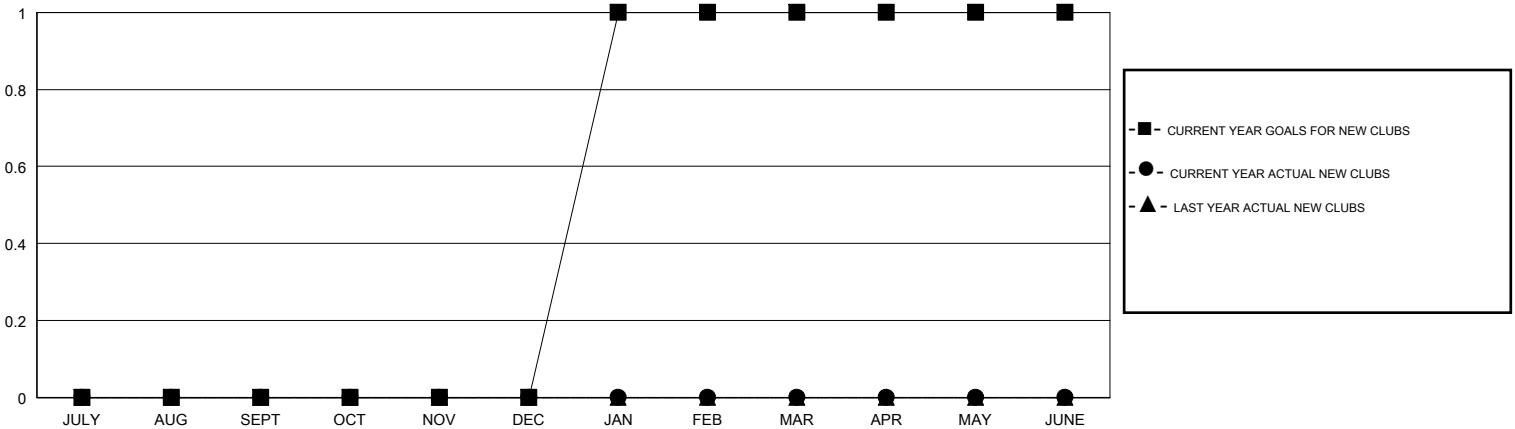
GMT:

LOCATION OHIO

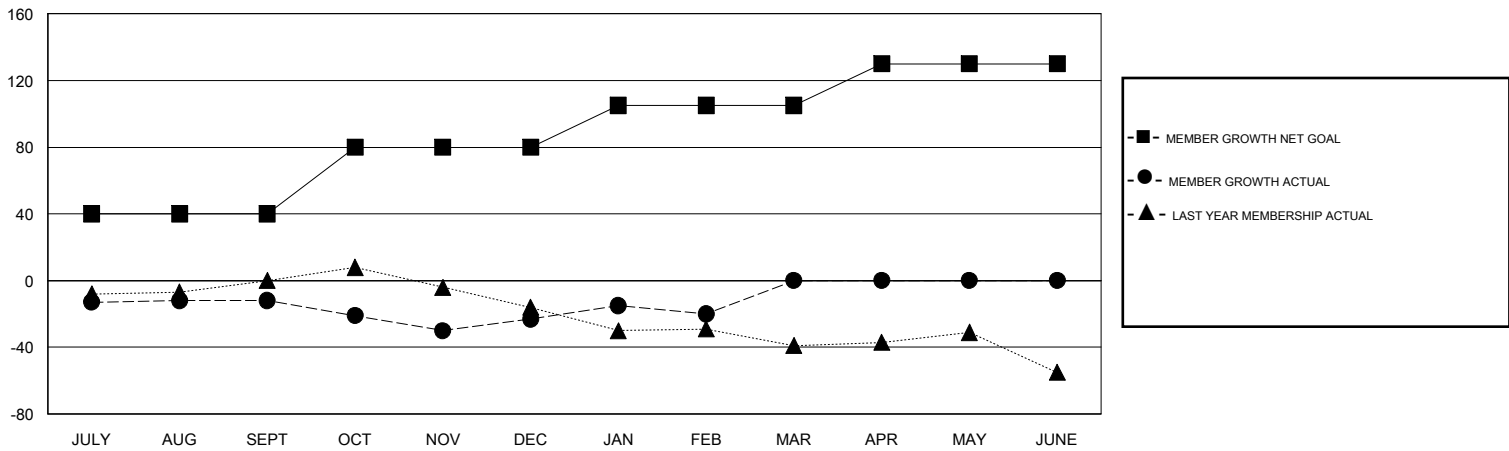
GMT CA

| Clubs | | | | Members | | | |
|-----------------------|---------------|-----------|---------------|-----------------------|------------------------|----------------------|--|
| RESULTS FOR 2019-2020 | | | | RESULTS FOR 2019-2020 | | | |
| QUARTER | NEW CLUB GOAL | NEW CLUBS | DROPPED CLUBS | QUARTER | MEMBER GROWTH NET GOAL | MEMBER GROWTH ACTUAL | DROPPED MEMBERS ACTUAL (including transfers) |
| JULY/AUG/SEPT | 0 | 0 | 0 | JULY/AUG/SEPT | 40 | 34 | 44 |
| OCT/NOV/DEC | 0 | 0 | 1 | OCT/NOV/DEC | 40 | 25 | 36 |
| JAN/FEB/MAR | 1 | 0 | 0 | JAN/FEB/MAR | 25 | 25 | 22 |
| APR/MAY/JUNE | 0 | 0 | 0 | APR/MAY/JUNE | 25 | 0 | 0 |

GOALS AND ACTUAL NEW CLUBS CUMULATIVE



GOALS AND ACTUAL MEMBERS CUMULATIVE



| | | |
|--|---|--|
| DROPPED CLUBS: 1 | 30 CLUBS OF 56 ADDED 1 OR MORE NEW MEMBERS | <u>GENDER DISTRIBUTION</u> MALE 1,001 (68.56%) FEMALE 459 (31.44%) |
| <u>DROPPED MEMBERS</u> DECEASED 20 CLUB CANCELLED 0 OTHER 82 <hr/> TOTAL 102 | CLICK HERE FOR CUMULATIVE MEMBERSHIP DATA | TOTAL FAMILY UNIT MEMBERS 279 FAMILY MEMBERS PAYING HALF DUES 145 |